

How to Cite ChatGPT in APA

What You Need to Know



Prepared by Med Kharbach, PhD
www.educatorstechnology.com

When to Cite ChatGPT?



1

Cite ChatGPT when you **reproduce** text it generated in your work.

2

Explain how you used ChatGPT in the **Method section** or **Introduction**, depending on context.

3

Always include the prompt used and the AI-generated response, either in the text or in an **appendix**.

In-Text Citation Format

Narrative:
OpenAI (Year)

Parenthetical
(OpenAI, Year)

1

Example of Narrative Citation

According to OpenAI (2023), the notion of left-brain versus right-brain dominance is largely considered a myth.

2

Example of Parenthetical citation

The response stated that "the idea of people being strictly 'left-brained' or 'right-brained' is an oversimplification" (OpenAI, 2023).

Appendices or Supplemental Materials

- Include full responses in an appendix or supplemental material if they're long or essential to your work.
- Label clearly and reference them in the body of your paper.

Reference List Entry

Author

Year of the version used

Title: ChatGPT (Version), italicized, with version in parentheses

Bracketed Description of the model

OpenAI. (2023). ChatGPT (Mar 14 version) [Large language model].
<https://chat.openai.com/chat>

References

URL of ChatGPT interface

McAdoo, T. (2023, April 7). How to cite ChatGPT [Blog post]. APA Style Blog. <https://apastyle.apa.org/blog/how-to-cite-chatgpt>

APA Template for Citing ChatGPT



Prepared by Med Kharbach, PhD
www.educatorstechnology.com

APA Reference Template



OpenAI. (YEAR). ChatGPT (MONTH YEAR version) [Large language model]. <https://chat.openai.com/chat>



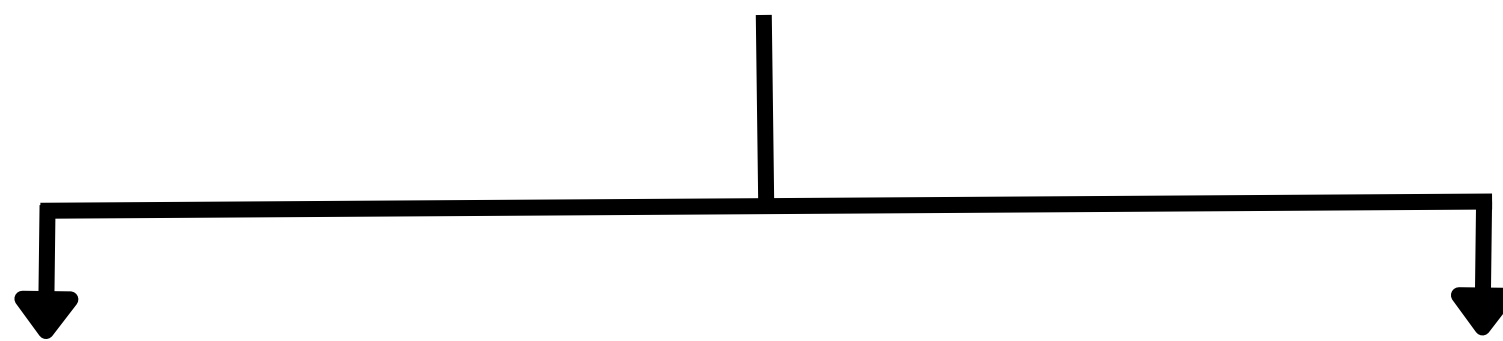
Example

(for a response generated today in June 2025):



OpenAI. (2025). ChatGPT (Jun 2025 version) [Large language model]. <https://chat.openai.com/chat>

In-Text Citation Templates



Parenthetical: (OpenAI, YEAR)
→ e.g., (OpenAI, 2025)

Narrative: OpenAI (YEAR)
→ e.g., OpenAI (2025)

Students should:

- Replace YEAR and MONTH YEAR with the version they used (visible in the ChatGPT interface).
- Use direct quotes from ChatGPT if applicable.
- Mention the prompt used and optionally include the full output in an appendix.

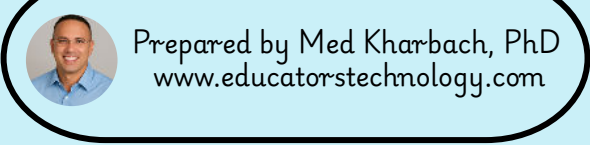
How to Use It



References

McAdoo, T. (2023, April 7). How to cite ChatGPT [Blog post]. APA Style Blog. <https://apastyle.apa.org/blog/how-to-cite-chatgpt>

APA Tips for Using AI in Scholarly Publications



Disclosure Required



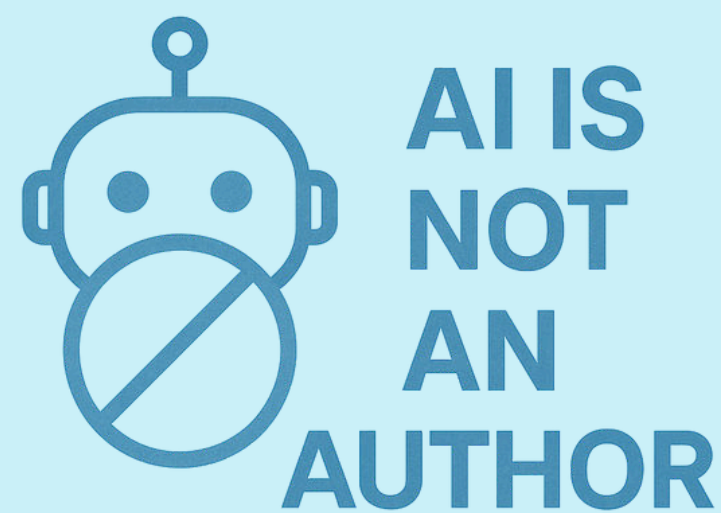
Any use of generative AI must be disclosed in the methods section and properly cited.

Author Responsibility



Authors are responsible for verifying all AI-generated content including facts and citations.

AI Is Not an Author



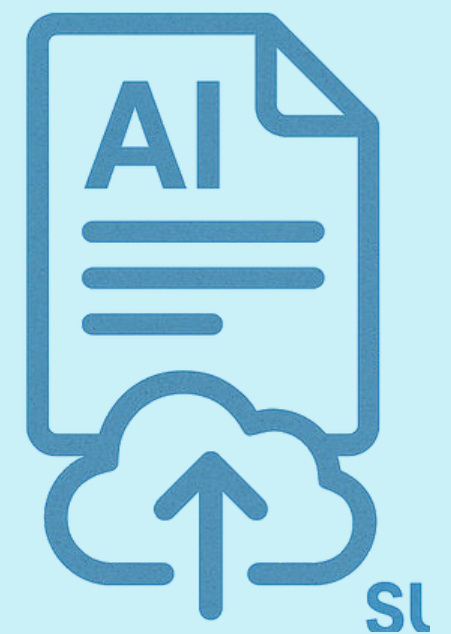
AI tools cannot be credited as authors.

Limited Use Allowed



AI tools can be used for specific tasks like editing, but this must be disclosed.

Supplemental Material



The full AI output must be uploaded as supplemental material.

Confidentiality Rule



Authors must not input unpublished or confidential material into AI tools.

References

American Psychological Association. (n.d.). APA publishing policies. APA. Retrieved June 9, 2025, from <https://www.apa.org/pubs/journals/resources/publishing-policies?tab=4>

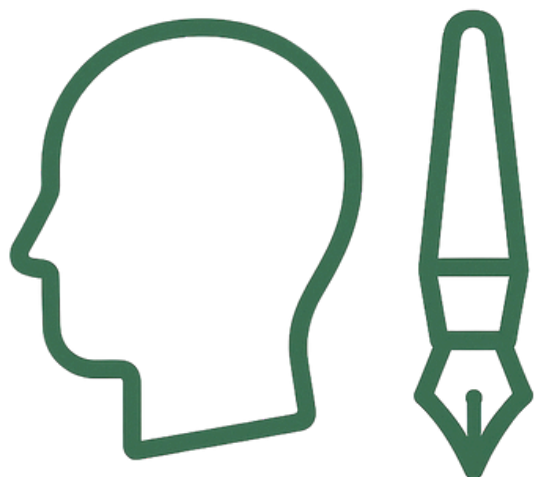
Copyright and AI

US Copyright Office Guidance



Prepared by Med Kharbach, PhD
www.educatorstechnology.com

Human Authorship Required



Only human-created content is eligible for copyright protection. AI-generated material alone cannot be copyrighted.

Creative Input Matters



If you creatively select, arrange, or modify AI-generated content, your contributions may be copyrightable—even if the AI content is not.

AI Is Not an Author



You cannot name an AI tool or company as an author or co-author on a copyright registration.

Use Tools, Not Creators



Using AI as a tool (like Photoshop or a music pedal) is acceptable. What matters is whether you control the creative expression.

Disclose AI Use Clearly



If your work contains AI-generated elements, you must explicitly disclose them in your copyright application.

Case-by-Case Review



The Copyright Office evaluates works individually, assessing the extent of human creativity and control.

References

U.S. Copyright Office. (2023, March 16). Copyright registration guidance: Works containing material generated by artificial intelligence [Policy statement]. Federal Register, 88(51), 16190–16194. <https://www.federalregister.gov/documents/2023/03/16/2023-05321/copyright-registration-guidance-works-containing-material-generated-by-artificial-intelligence>